

What is the Bee Network?

It is Greater Manchester's vision to create an integrated London-style transport system which will join together buses, trams, rail as well as cycling and walking.

The vision is to create the perfect neighbourhood and the Bee Network will connect up every area and community in Greater Manchester, making it easy, safe and attractive for people to ride, scoot, walk or wheel will create a transport system that joins up buses, trams, cycling, walking and rail.

The scheme will make trips by foot and bike a safe, pleasant experience, contributing to the delivery of the UK's largest cycling and walking network.



Consultation

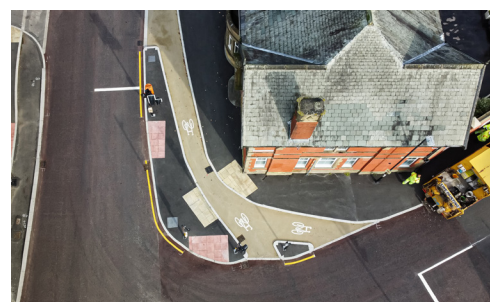
Rochdale Borough Council have completed the formal public consultation in relation to the proposed Castleton to Rochdale Active Travel Route. This route will form a link from the current construction works directly to Rochdale town centre.

Formal consultation opened on 24th July 2023 and closed on 25th August 2023. Rochdale Borough Council is now in the process of summarising consultation feedback, updates will be provided following completion of this process.

Progress



All carriageway re-surfacing and road markings are set to be finished by the end of October 2023, promising smoother and safer roads for commuters. Additionally, the much-anticipated block paving footpath works began on 10th October 2023, and are scheduled to be completed by the 20th December 2023. These improvements will enhance pedestrian pathways, ensuring convenience and accessibility for the residents.

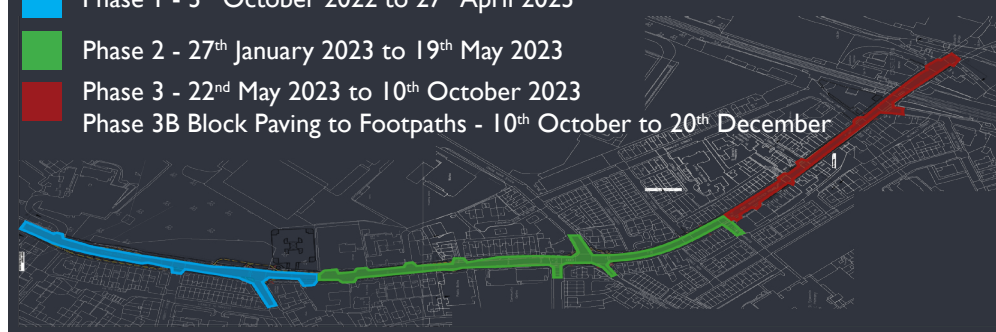


Looking ahead, there are plans to construct the new car park on Railway Approach, set for January 2024. This aims to address parking challenges in the area and is expected to be finalised by March 2024.



Planned Works

- Phase 1 - 3rd October 2022 to 27th April 2023
- Phase 2 - 27th January 2023 to 19th May 2023
- Phase 3 - 22nd May 2023 to 10th October 2023
- Phase 3B Block Paving to Footpaths - 10th October to 20th December



Vacancies

We are currently recruiting for the following roles:

- General Construction Operative
- Civils Project Manager
- Assistant Works Manager
- Buyer
- Estimator
- Contract Administrator

Please submit your CV to hr@gcox.co.uk.

For more information about the scheme visit www.rochdale.gov.uk/BeeNetwork or to sign up for our monthly newsletter send your email address to beenetwork_rochdale@gcox.co.uk.